

LEARN YOUR BOAT



Beneteau Oceanis 46

Specifications

- Length : 14.60
- Beam : 4.5m
- Draft : 2m
- Cabins : 5
- Berths : 10
- Heads :3
- Engine :Yanmar 58 HP
- Year Models :2019, 2020
- Water Capacity : 570lt
- Fuel Capacity : 200 It



Equipment List

- Air Conditioning : Extra Charge
- Autopilot : Yes
- Bimini Top :Yes
- Bow Thruster : Yes
- Electric Winch for Mainsail : No
- Electronic Instruments :Yes
- GPS Plotter Inside : No
- GPS Plotter on Cockpit :Yes
- Main Sail : Full Batten
- Outboard Motor : Extra Charge
- Radio/CD player :Yes
- Solar Panel :Yes
- Sprayhood :Yes
- Steering Wheel :2
- Water Maker :No
- Generator (220v) : No

Contents

| | |
|---------------------------------------|----|
| 1. Gangway and Platform..... | 4 |
| 2. Anchor System..... | 5 |
| 3. Bow Thruster..... | 5 |
| 4. Sails..... | 6 |
| 5. Starting the Engine..... | 7 |
| 6. Electricity..... | 8 |
| 7. Air Condition..... | 9 |
| 8. Electronics / Navigation..... | 10 |
| 9. Fridge..... | 11 |
| 10. Diesel..... | 11 |
| 11. Gas System / Kitchen..... | 12 |
| 12. Toilets / Shower Bilge Pumps..... | 13 |
| 13. Waste Tanks..... | 13 |
| 14. Fresh Water System..... | 14 |
| 15. Bilge Pump..... | 15 |
| 16. Emergency Helm..... | 15 |
| 17. Outboard..... | 16 |

ADVICES TO THE SKIPPER

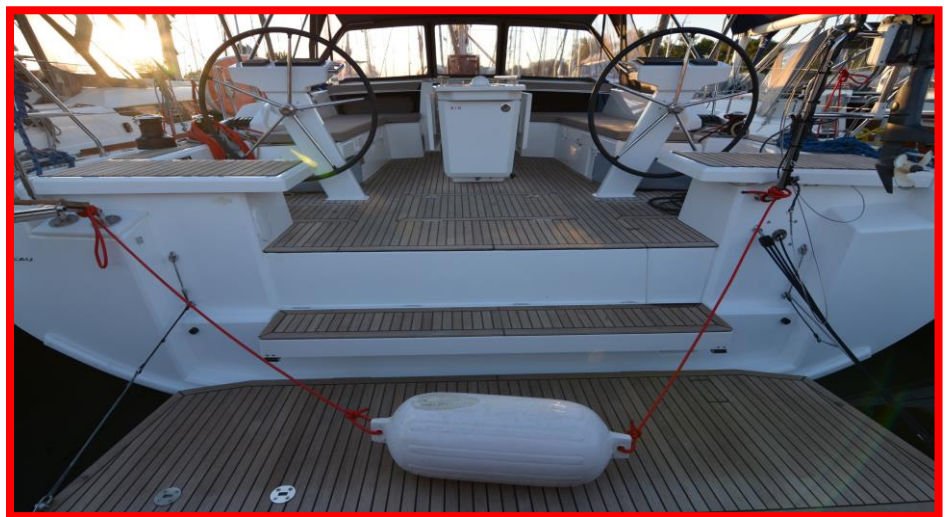
- Always keep the gangway up while you sail.
- Make sure that it does remain tied properly while you sail.
- Avoid using it as a Jumping plank. Serious injuries may occur.
- Bring down the gangway only when you make sure that you have moored the yacht properly.
- When you are moored, make sure that the gangway has enough distance from the pier, in order to avoid getting damaged from sudden waves. (Damaged Gangway costs 200 euros)
- Do not move/sail with an open platform.
- When you close the platform, secure with the hinge/rope brake.

1.GANGWAY AND PLATFORM

Gangway



Platform



ADVICES TO THE SKIPPER

-The windlass won't operate with the engine switched off.

- Increase the engine while in neutral up to 1500 RPM in order to lift up the anchor properly.

- When you bring up the anchor, always make sure that the chain is not piled up in its storage room. This situation may damage the winch by blocking it from the bottom chain entrance.

- NEVER drop the anchor in depths more than 15 meters if it's not an emergency.

- Use the bow thruster system only for mooring/maneuvering in a port or mooring spot.

-Never use the bow thruster while sailing in the open sea.

- Always check for floating ropes or other objects before using the bow thruster.

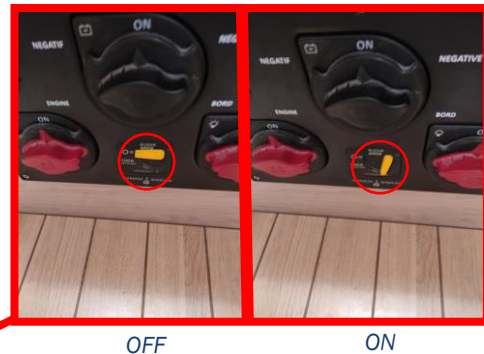
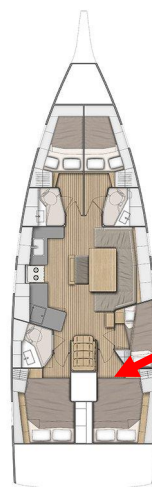
2. ANCHOR SYSTEM



Make sure that the chain is attached on the boat properly.



Windlass Thermal Switch



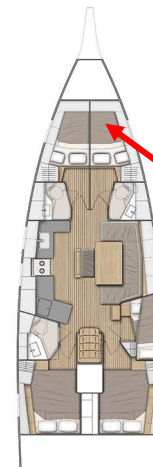
OFF

ON

3. BOW THRUSTER



- Tap twice quickly the blue button to switch on
- Tap once to switch off



The Bow thruster main fuse, is located under the bed in the front right cabin.

ADVICES TO THE SKIPPER

- Never open the brake of the genoa halyard for no emergency reason.

- In order to open and close the main sail turn the bow against the wind.

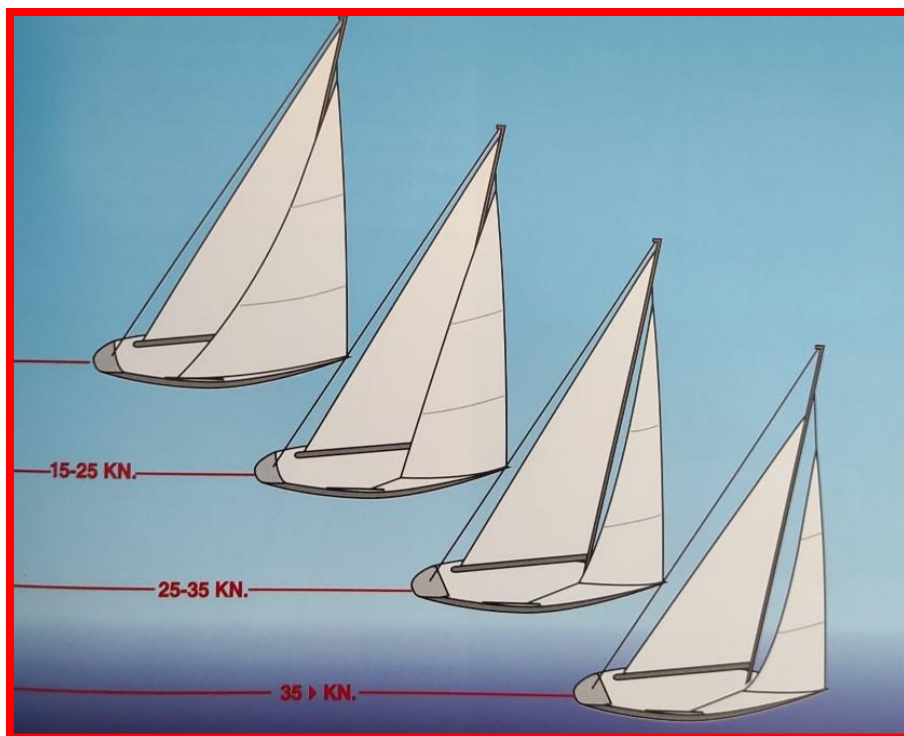
- Before opening the main sail, release a bit tension of main sheet and Boomvang, so that you work easier.

- For weather forecast turn in channel 16 in VHF Forecast (Olympia Radio) every 4 hours. (09:00 – 13:00 – 17:00 – 21:00 – 01:00).

- Additionally we suggest you to use the “Windy”, “Windfinder” or “Poseidon” application.

4.SAILS

Open and check the sails/rigging before leaving the port. If this is not possible due to the wind, once you leave the port open and check the sails. Contact the base immediately for any issues or damages.



**Source: Panagotis G. Stoutzas (2003) Sailing and Nautical Art, Athens: Hellenic Offshore Racing Club*

General Reefing Suggestions:

15-22 Knots = First Reef
22-28 Knots = Second Reef
28 and more = Third Reef

**- KEEP
MAX
2.200
RPM!!!**

- When sailing with engine OFF, keep control lever at neutral.

- When switching OFF the engine, don't forget to press the OFF button.

- For every noise or light signal at the starting panel, get in contact with the base immediately.

5. STARTING THE ENGINE



In order to increase RPM to the engine without moving the propeller, **PRESS THE RED BUTTON** and push the respective control level forward. Adjust to the desired RPM.



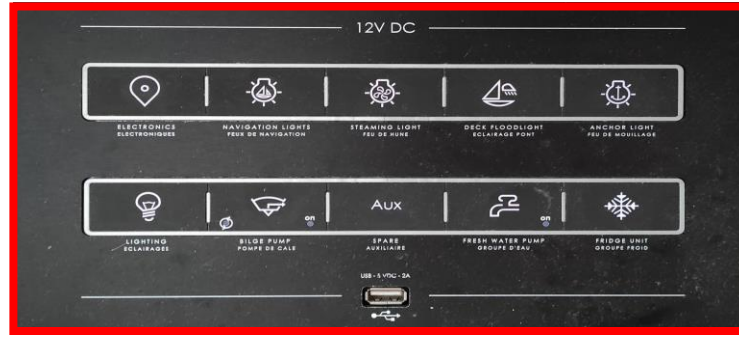
6.ELECTRICITY

ADVICES TO THE SKIPPER

- The solar power charges the batteries automatically and mainly helps the battery to be "fresh". IT CANNOT SUPPORT THE WHOLE CONSUMPTION OF THE BOAT.

- If you stay in a bay or if you sail many hours, charge the battery with the generator or with the engine on, in neutral up to 1500RPM.

- Manage the electricity capacity according to the conditions. You need minimum 3 engine hours per day to keep batteries charged.



12 VOLT DC ELECTRONIC PANEL



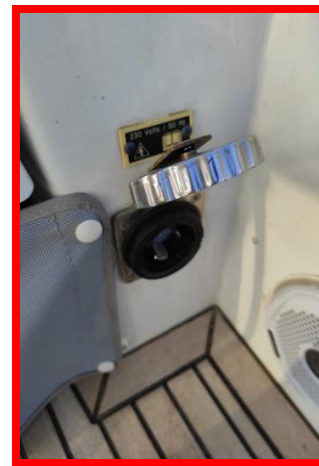
Both Sets of Batteries are located under the beds.



The one on the right is the engine Battery.



SOLAR PANEL

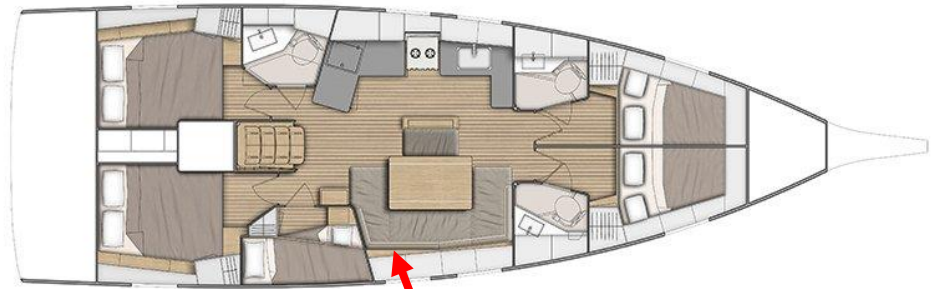


SHORE POWER CONNECTION

7. AIR - CONDITION

- The majority of the Greek Marinas electric infrastructure, can't provide stable and secure electricity for demanding purposes like using the air-condition.

- Using the Air-Condition with an unstable shore connection may cause a damage.



ADVICES TO THE SKIPPER

- Depth is counting from the water line to the bottom of the sea.

- Instructions for specific use of the multi-display screen and autopilot may be found in the chart table.

- If during the night you hear a noise coming from the charger, it means it has noticed drop of voltage. In this case turn the fuses of the charger off.

- Use the upper VHF as primary. The other one is spare for emergency.

8. ELECTRONICS/NAVIGATION

BRIDGE

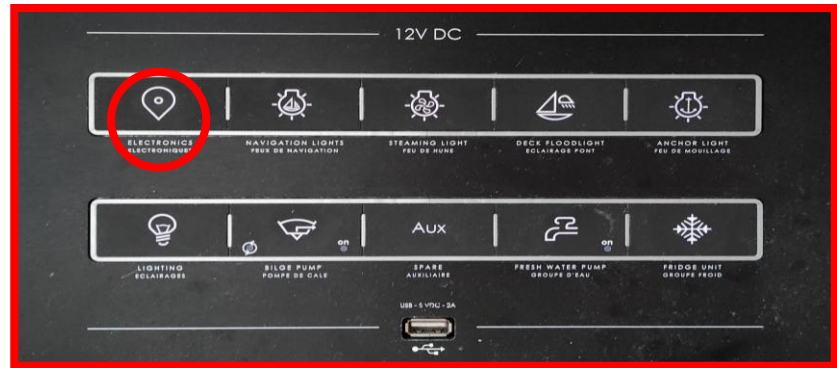


Gps Plotter

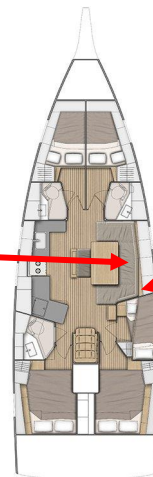
Auto Pilot

Bow Thruster

GMDSS



GMDSS battery and charger, located under the main bench.



VHF Devices

ADVICES TO THE SKIPPER

- If you stay with closed engine and no shore power connection for more than 2 hours, switch of the fridge to save energy.

9. FRIDGE



FREEZER



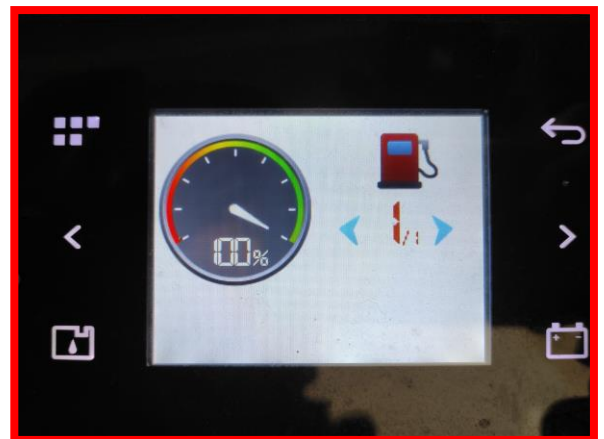
FRIDGE



10. DIESEL



Diesel Deck Filler



Diesel indication on the panel screen.

11. GAS SYSTEM/KITCHEN

- Interior gas valve
operation:

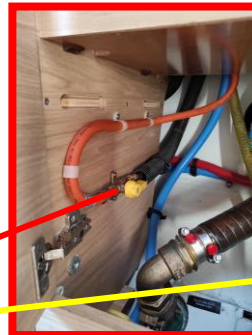
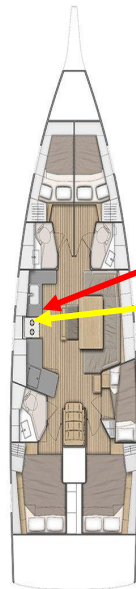
ON – parallel to
pipe

OFF –
perpendicular to
pipe

- In case that you
smell the gas in the
boat close interior
and exterior gas
valves.



Gas Bottles Locker



- Security for oven door
- Button for over
- Buttons for gas stoves left and right

In order to make fire in the gas stoves:

- Press the respective gas stove button and turn.
- Wait for a 3 sec.
- Press the sparkle button or use a lighter.
- Leave the gas stove button and adjust the fire.

ADVICES FOR THE SKIPPER

- Do not throw papers, wiped or any other waste in the toilet bowl.

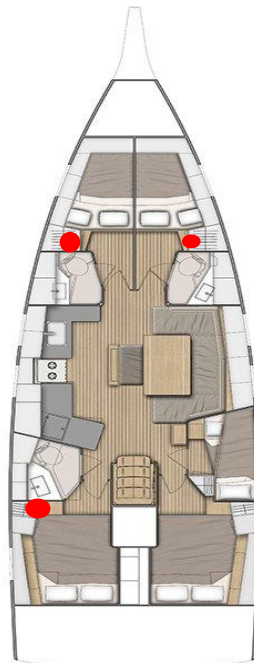
- The toilet is checked by base stuff – check it yourself too.

RETURNING THE BOAT WITH
BLOCKED TOILET
OR WASTE TANKS
COSTS 200 EUROS

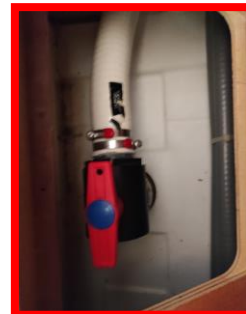
12. TOILETS /SHOWER BILGE PUMP



13. WASTE TANKS



Waste Tank Vane Closed

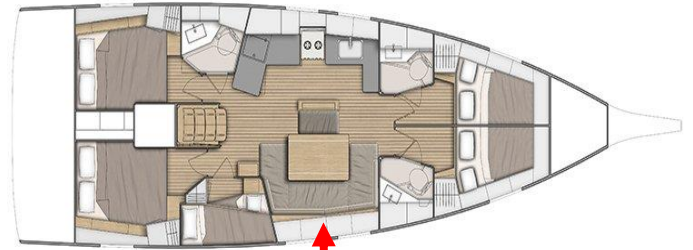


Waste Tank Vane Open

ADVICES FOR THE SKIPPER

- Never operate the system when the tank is empty (the electrical equipment may be damaged). Close the “Fresh Water Pump Switch” in the electrical panel.

14. FRESH WATER SYSTEM



The word “WATER” is written on the top of every water tap.
Make sure you won't fill with water the Diesel or the Waste Tanks.



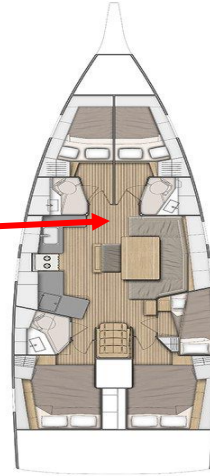
FRESH WATER PUMP SWITCH



ADVICES TO THE SKIPPER

- Keep the Switches of the electrical bilge pumps in AUTO and only in emergency situation use the ON and manual bilge pump.

15. BILGE PUMP



ELECTRICAL BILGE PUMP SWITCH



In AUTO the bilge pump is working automatically.

In ON the bilge pump is working without stop.

16. EMERGENCY HELM

Emergency manual Bilge pump



Located in the Back Locker



ADVICES THE SKIPPER

17.OUTBOARD

- Do not use the outboard outside of the water.

- In shallow waters stop and lift the outboard.

- Do not make trolling fishing with the outboard on the dinghy.

- NEVER PULL THE DINGHY WHEN SAILING !!!

- In order to drop the dinghy in the sea, use the spare halyard or get help from one of the crew.

- When getting with the dingy to the shore, avoid "touching" sharp surfaces that will harm it.

- Do not lay/step on the dinghy when it is on the deck upside down.



1. Fuel Tank Vent
2. Starter Grip
3. Quick Stop Ignition
4. Choke
5. Shifts
6. Fuel Valve

In order to start the outboard:

1. Put the quick stop switch clip in the emergency stop switch, and attach the emergency stop switch lanyard securely to the operator.
2. Open the fuel tank vent by turning the vent knob.
3. Turn the fuel valve ON
4. Move the fuel valve lever to the ON position
5. Move the throttle grip to the start position.
6. To start a cold engine, pull the Choke knob in the ON position. To restart a warm engine, leave the choke knob in the OFF position.
7. Pull the starter grip lightly until you feel resistance, then pull briskly in the direction of the arrow as shown above. Return the starter grip gently.

